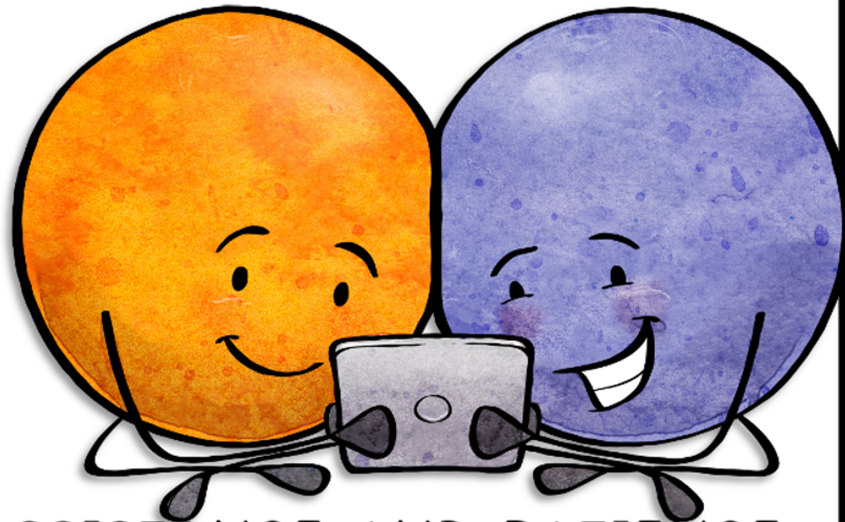


guide
for

FAMILIES

- Log on 2-3 minutes before your meeting time
- Set up your student in a well-lit area away from noise and distractions
- The ideal area is:
 - a table & chair, facing away from televisions/electronics
 - a room separate from where family business is occurring (not in a busy kitchen or a loud living room)
- Make sure your student is wearing appropriate clothing and is comfortable.
- Minimize the need for breaks, and maximize learning time by having your child eat prior to the meeting, sit with a cup of water to drink, and have them use the restroom beforehand.
- You are welcome to sit beside your child to support them. Help them, and their teacher, by keeping your child seated, keeping the camera stabilized, and reminding them to follow directions. Please do not give them answers to questions or worry about their performance.
They are here to learn and are not expected to answer everything correctly.
- If the connection is spotty, or in the event of technical difficulties, please exit the meeting and try to reload the page.



THANK YOU FOR YOUR ASSISTANCE AND PATIENCE
AS WE ALL ADAPT THIS NEW WAY OF LEARNING!